



up to
\$5,000*
worth of
landscaping

Flying Start Package

The easy way to create your own green haven.

As part of Peet's vision to make Flagstone Rise a great-looking community, we're offering a free landscaping package to help you create your own sanctuary.

* Value stated is approximate only and based on a 600m² allotment. Exact value will vary depending on lot size, location and house size. The package excludes fencing, driveways, footpaths, paths, letterboxes, retaining walls, turf to the nature strip and rubbish removal. Subject to contract terms.



Flagstone Rise
Step up

A tailored landscape solution for your front yard worth up to \$5,000*



FREE
Landscaping
Package

Your package includes:

- A personal consultation with our landscape contractor to create a tailored solution for your front garden;
- A selection of plants selected to suit the local environment;
- Turf, garden beds, edging and more;
- Prompt installation of your garden by our friendly and reliable contractors.

Peruse the landscape plans and plant schedules to see some possible arrangements for different lot sizes.

Choose from:

Three planting options:

- Contemporary
- Traditional
- Australian Native

Two landscape styles:

- Formal
- Informal

Let us take the effort and expense out of landscaping, and together we can create a more beautiful Flagstone for everyone. Contact Peet about your free Flying Start Package today!

For more information and to obtain an application form to claim your Flying Start Package, visit our website at flagstonerise.com.au or contact Peet Limited on (07) 3137 2040 flyingstart@peet.com.au



Flagstone Rise
Step up

INFORMAL LAYOUT

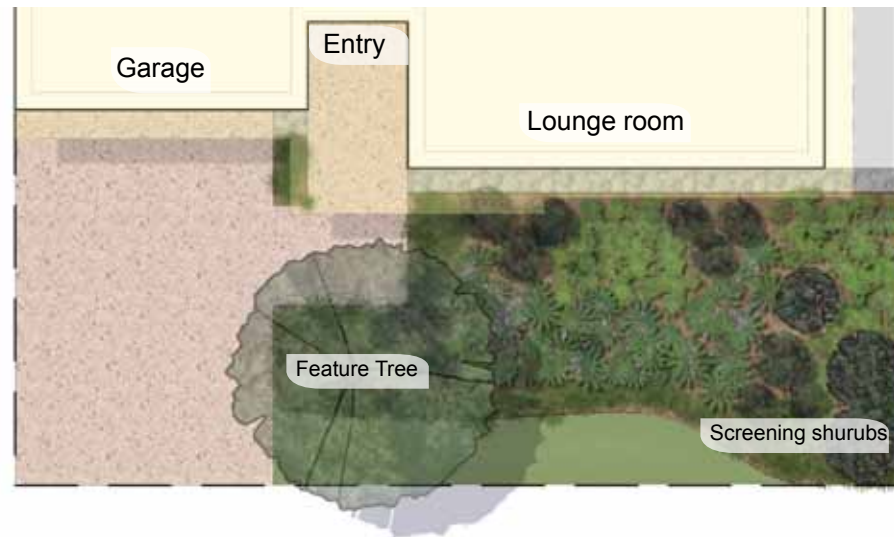


The smooth curves and meandering lines of your informal garden will soften your home and create a relaxing and inviting atmosphere.

A large bed of screening shrubs and groundcovers reduces turfed areas, making your garden easier to maintain and more water efficient.



Choose from the Native or Contemporary plant lists for best effect.



up to
\$5,000*
 worth of
 landscaping



FORMAL LAYOUT

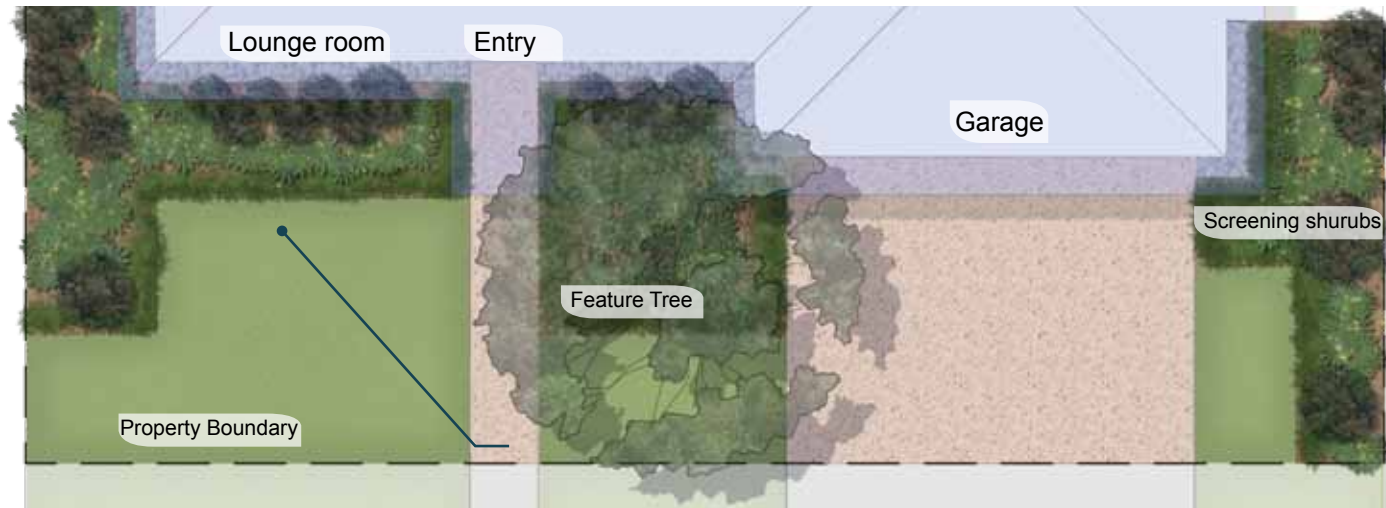


With its elegant lines, a formal garden layout will frame your home beautifully.

A feature tree is the stylish focal point of the design and will shade and cool your home. Screening shrubs provide privacy, while groundcovers create a soft, natural outlook from the front living area.



Choose from the Traditional plant list for best effect.



For more information and to obtain an application form to claim your Flying Start Package, visit FLAGSTONERISE.COM.AU or contact Peet Limited on (07) 3137 2040 or flyingstart@peet.com.au

* Value stated is approximate only and based on a 600m² allotment. Exact value will vary depending on lot size, location and house size. The package excludes fencing, driveways, footpaths, paths, letterboxes, retaining walls, turf to the nature strip and rubbish removal. Subject to contract terms.



PLANT PALETTE

CONTEMPORARY

Description	Botanical Name	Common Name
Feature Tree	<i>Alphitonia excelsa</i>	Red Ash
	<i>Atractocarpus fitzalanii</i>	Native Gardenia
	<i>Backhousia citriodora</i>	Lemon Scented Myrtle
	<i>Elaeocarpus reticulatus</i>	Blueberry Ash
	<i>Archontophoenix alexandrae</i>	Alexandra Palm
	<i>Grevillea baileyana</i>	Bailey's Oak (25m)
	<i>Melaleuca leucadenron</i>	Paper Bark Tree
Large Screening Shrub	<i>Callistemon viminalis</i>	Weeping Bottle Brush
	<i>Evodiella muelleri</i>	Little Euodia
	<i>Pittosporum undulatum</i>	Sweet Pittosporum
	<i>Rhapis excelsa</i>	Lady Finger Palm
	<i>Syzygium wilsonii</i>	Powder Puff LilyPilly
	<i>Xanthostemon chrysanthus</i>	Golden penda
Small Shrub	<i>Alocasia brisbanensis</i>	Cunjevoi
	<i>Alpinia caerulea</i>	Native Ginger
	<i>Cordiline rubra</i>	Red Leaved Palm Lily
	<i>Cyathea cooperi</i>	Scaly Tree Fern
	<i>Heliconia spp.</i>	Heliconia
	<i>Hibiscus spp.</i>	Hibiscus
Groundcovers and Grasses	<i>Alpinea sp.</i>	Native Ginger
	<i>Cordylina spp.</i>	Palm Lily
	<i>Crinum pedunculatum</i>	River Lily
	<i>Curculigo recurvata</i>	Palm Grass
	<i>Dianella caerulea</i>	Blue Flax Lily
	<i>Hymenocallis spp.</i>	Spider Lily
	<i>Philodendron 'Xanadu'</i>	Philodendron
	<i>Spathiphyllum spp.</i>	Peace Lily
	<i>Asplenium spp.</i>	Crows Nest Fern
	<i>Bromeliad spp.</i>	Bromeliads
	<i>Cissus antarctica</i>	Native Grape

TRADITIONAL

Description	Botanical Name	Common Name	
Feature Tree	<i>Betula nigra</i>	Tropical Birch	
	<i>Buckinghamia celssissima</i>	Ivory Curl Flower	
	<i>Cupaniopsis anacardioides</i>	Tuckeroo	
	<i>Elaeocarpus reticulatus</i>	Blueberry Ash	
	<i>Tabebuia chrysanthus</i>	Yellow Flowering Tabebuia	
	<i>Magnolia grandiflora 'Little Gem'</i>	Magnolia	
Large Screening Shrub	<i>Acmena smithii</i>	Lily Pilly	
	<i>Doryanthes excelsa</i>	Gymea Lily	
	<i>Michelia figo</i>	Port Wine Magnolia	
	<i>Metrosideros spp.</i>	New Zealand Christmas Tree	
	<i>Westringia fruticosa</i>	Coastal Rosemary	
	Small Shrub	<i>Cordylina fruticosa</i>	Miniature Baeckea
<i>Callistemon 'Little John'</i>		Bottlebrush	
<i>Gardenia magnifica</i>		Gardenia	
<i>Grewia occidentalis</i>		Lavendar Star Flower	
<i>Melaleuca 'Claret Tops'</i>		Melaleuca	
<i>Syzygium australe 'Tiny Trev'</i>		Lily Pilly	
<i>Xanthorrhoea spp.</i>		Common Grass Tree	
Groundcovers and Grasses		<i>Dianella caerulea</i>	Flax Lily
		<i>Dietes grandiflora</i>	Wild Iris
		<i>Hymenocallis littoralis</i>	Spider Lily
	<i>Lomandra longifolia</i>	Mat rush	
	<i>Chrysocephalum apiculatum</i>	Yellow Buttons	
	<i>Gardenia radicans</i>	Creeping Gardenia	
	<i>Grevillea 'Royal Mantle'</i>	Groundcover Grevillea	
	<i>Wahlenbergia stricta</i>	Australian Bluebell	
	<i>Scaevola aemula</i>	Fan Flower	
	<i>Asplenium spp.</i>	Crows Nest Fern	
	<i>Bromeliad spp.</i>	Bromeliads	
	<i>Cissus antarctica</i>	Native Grape	

AUSTRALIAN NATIVE

Description	Botanical Name	Common Name
Feature Tree	<i>Buckinghamia celssissima</i>	Ivory Curl Flower
	<i>Cupaniopsis anacardioides</i>	Tuckeroo
	<i>Callistemon salignus</i>	Willow Bottlebrush
	<i>Tristaniopsis laurina</i>	Water Gum
	<i>Melaleuca quinquenervia</i>	Broad-leaved Paper Bark
Screening Shrub	<i>Acacia fimbriata</i>	Brisbane Golden Wattle
	<i>Callistemon viminalis</i>	Bottlebrush
	<i>Grevillea 'Fire Sprite'</i>	Grevillea
	<i>Grevillea 'Honey Gem'</i>	Grevillea
	<i>Jacksonia scoparia</i>	Dogwood
	<i>Leptospermum polygalifolium</i>	Lemon-scented Tea Tree
	<i>Syzygium australe</i>	Lily Pilly
Shrub	<i>Banksia robur</i>	Swamp Banksia
	<i>Grevillea 'Robyn Gordon'</i>	Grevillea
	<i>Leptospermum 'Cardwell'</i>	Cardwell Tea Tree
	<i>Melaleuca 'Claret Tops'</i>	Claret Tops
	<i>Syzygium australe 'Elite'</i>	Scrub Cherry
	<i>Westringia fruticosa</i>	Coastal Rosemary
Groundcovers and Grasses	<i>Austromyrtus dulcis</i>	Midyim
	<i>Lomandra longifolia</i>	Mat Rush
	<i>Melaleuca thymifolia</i>	Thyme Leaf Melaleuca
	<i>Crinum pedunculatum</i>	River Lily
	<i>Themeda australis</i>	Kangaroo Grass
	<i>Ciccus rhombifolia</i>	Grape Ivy
	<i>Chrysocephalum apiculatum</i>	Yellow Buttons
	<i>Grevillea 'Royal Mantle'</i>	Groundcover Grevillea
	<i>Hardenbergia violacea</i>	Native Sarsaparilla
	<i>Hibbertia scandens</i>	Gold Guinea
	<i>Myoporum parvifolium</i>	Prostrate myoporum
	<i>Scaevola aemula</i>	Fan Flower

